

CS2090 (A423)

This parts catalog includes MB No 1 to 4.

PARTS CATALOG

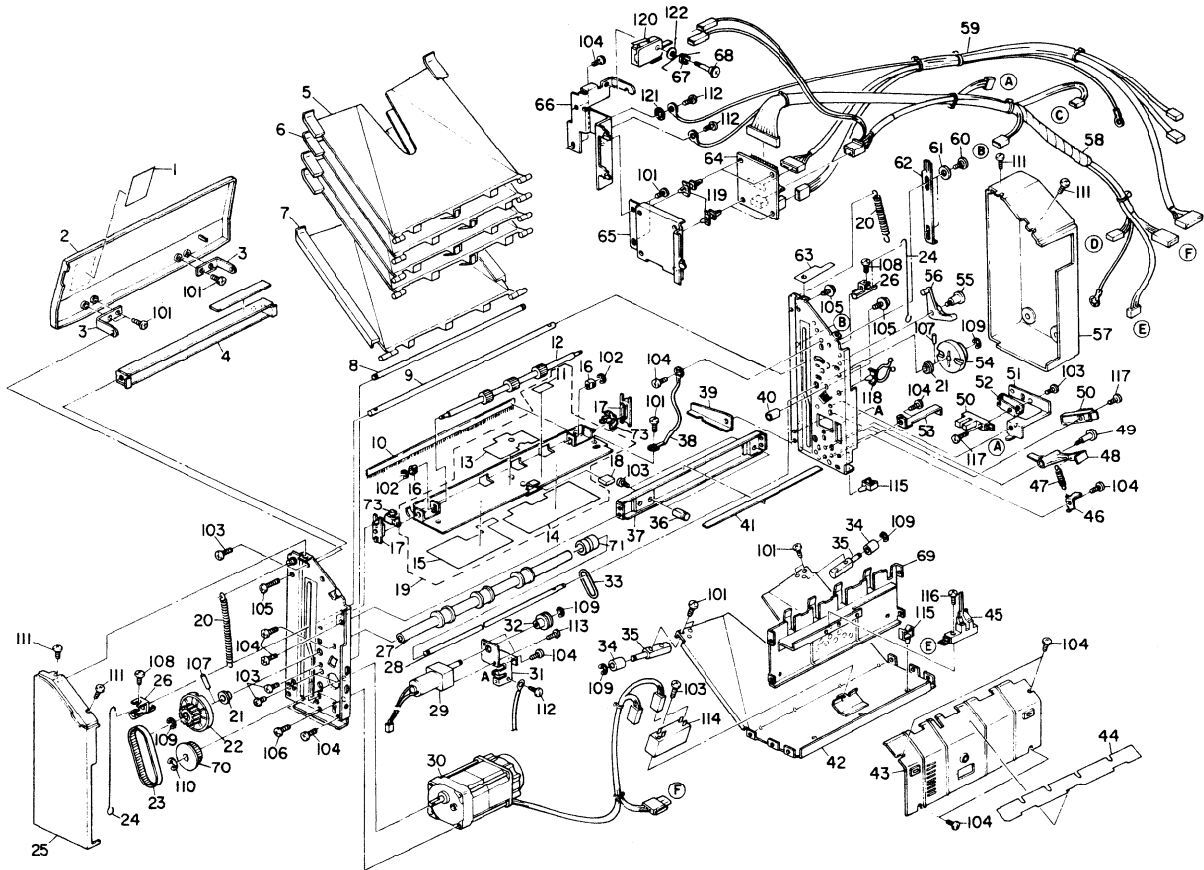
INTRODUCTION

This chapter instructs you the numbers and names of these parts on this machine.

INDEX to PARTS CATALOG

1. Sorter (A423)	2
2. Bin Motor Board (A423)	4
3. Sorter Harness (A423)	6
4. Decal and Document (A423)	8
Parts Index	11

1. SORTER (A423)



1. SORTER (A423)

Index No.	Part No.	Description	Q'ty per Assembly
1	A414 6512	Jam Removal Decal	1
1	A414 6522	Multi-lingual Decal	1
2	A423 6311	Upper Cover	1
3	A423 6511	Upper Cover Hinge	2
4	A423 1161	Upper Stay	1
5	A414 3111	Sorter Bin - Odd	10
6	A414 3151	Sorter Bin - Even	10
7	A423 3221	Sorter Bin - Bottom	1
8	6803 3316	Lift Bar	1
9	A423 3513	Bin Support Shaft	1
10	AA12 1001	Antistatic Brush	1
11	A414 6521	Decal - Guide Plate	1
12	6803 2241	Upper Exit Roller	1
13	A423 2122	Upper Seal	1
14	A423 2124	Lower Rear Seal	1
15	A423 2123	Lower Front Seal	1
16	6803 2231	Bushing - 4x6x5mm	2
17	6803 2221	Guide - Upper Guide Plate	2
18	A423 2531	Guide Plate Knob	1
19	A423 2110	Upper Guide Plate	1
20	A423 3311	Left Spring	2
21	5053 0447	Bushing - 6mm	2
22	6803 3321	Front Transfer Wheel	1
23	6803 4311	Timing Belt - 94XL	1
24	A423 3517	Bin Support Wire	1
25	A423 6111	Front Cover	1
26	A423 3511	Bin Shaft Positioner	2
27	6803 2410	Lower Exit Roller	1
28	6803 3331	Transfer Wheel Shaft	1
29	A423 5410	DC Motor - 24V 2.9W (115V)	1
29	A414 5410	DC Motor - 24V 2.9W (220/240V)	1
30	6803 5400	Bin Motor - AC 14/17W	1
30	6803 5420	x/o,MB3	1
31	6803 4411	Bracket - Paper Exit Motor	1
32	A423 4216	Pulley	1

Index No.	Part No.	Description	Q'ty per Assembly
33	6803 4316	O Ring	1
34	A423 1144	Base Roller	2
35	A423 1143	Base Shaft	2
36	6803 1161	Upper Mounting Stud	2
37	A423 1151	Stay	1
38	6802 5703	Grounding Wire	1
39	A423 1145	Receive Plate	1
40	6803 2261	Dumper - Upper Guide Plate	2
41	6769 1128	Mounting Stay Magnet	1
42	A423 1131	Base Plate	1
43	6803 2111	Lower Guide Plate	1
44	A423 2121	Entrance Guide Plate	1
45	6803 5430	Paper Exit Sensor	1
46	6803 3414	Lever Stopper	1
47	6803 3413	Lever Spring	1
48	6803 3411	Lever - Home Position Sensor	1
49	6803 3412	Stepped Screw - M4	1
50	5205 5250	LED Sensor Type S	2
51	A423 3425	Bracket - Half Turn Sensor	1
52	6803 3427	Holder - Half Turn Sensor	1
53	6769 5655	Angle - Cord Clamp (70)	2
54	A423 3327	Transfer Wheel	1
55	6803 2273	Stepped Screw - M4	1
56	A423 2272	Guide Plate Arm	1
57	A423 6211	Rear Cover	1
58	6803 5600	Main Harness	1
59	6803 5610	Interface Harness	1
60	5403 2075	Stepped Screw	2
61	5895 2165	Washer - 6x12	2
62	A423 2271	Guide Plate Lever	1
63	A423 4434	Switch Sheet	1
64	6803 5500	Bin Motor Board	1
65	A423 4436	Board Bracket	1
66	A423 4431	Switch Bracket	1
67	A423 4433	Spring	1

Index No.	Part No.	Description	Q'ty per Assembly
68	A423 4432	Shoulder Screw - M2.5	1
69	A423 2311	Guide Plate	1
70	6803 4211	Pulley - 18T	1
71	6803 2415	Drive Pulley	1
72	A423 7111	Relay Guide Mylar MB1 (Added)	1
73	A414 2311	Spring Plate - Guide Stopper MB4 (Added)	2

Index No.	Part No.	Description	Q'ty per Assembly
101	0314 0060W	Philips Pan Head Screw - M4x6	
102	0720 0030E	Retaining Ring - M3	
103	0314 0080W	Philips Pan Head Screw - M4x8	
104	0434 0080W	Tapping Screw - M4x8	
105	0951 4010W	Philips Screw With Flat Washer - M4x10	
106	0315 0080W	Philips Pan Head Screw - M5x8	
107	0632 0140G	Parallel Pin	
108	0313 0060W	Philips Pan Head Screw - M3x6	
109	0720 0040E	Retaining Ring - M4	
110	0720 0060E	Retaining Ring - M6	
111	0344 0080D	Philips Truss Head Screw - M4x8	
112	0314 0080M	Philips Pan Head Screw - M5x8	
113	0965 3010W	Tapping Screw With Flat Washer - M3x10	
114	1606 0755	Capacitor - 10uF 220V (115V)	
114	1606 1380	Capacitor - 10uF (220/240V)	
115	1105 0196	Harness Clamp	
116	0313 0120W	Philips Pan Head Screw - M3x12	
117	0314 0120W	Philips Pan Head Screw - M4x12	
118	1105 0091	Cable Clip - 16mm	
119	1105 0193	Nylon Stud	
120	1204 1318	Microswitch	
121	0704 0040C	Toothed Washer - M4	
122	0701 0030B	Flat Washer - M3	

2. BIN MOTOR BOARD (A423)

CONNECTOR

SYMBOL NO.	INDEX NO.
CN101	101
CN102	102
CN103	104
CN104	103

DIODE

SYMBOL NO.	INDEX NO.
D101	106
D102	106

SSR

SYMBOL NO.	INDEX NO.
SSR101	105
SSR102	105

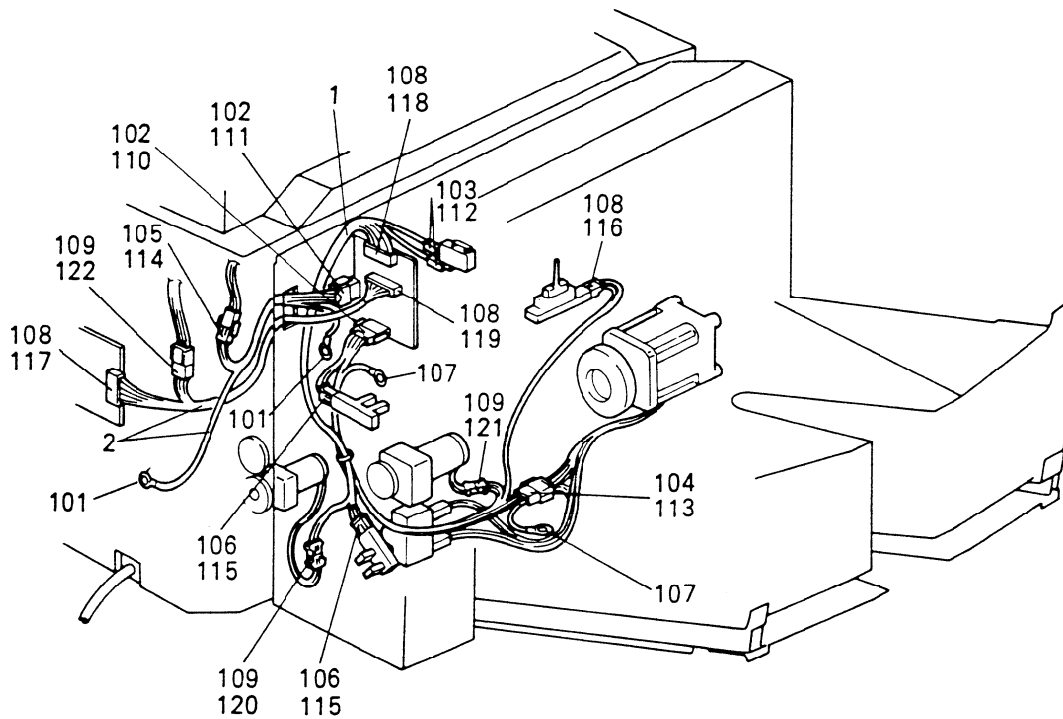
2. BIN MOTOR BOARD (A423)

Index No.	Part No.	Description	Q'ty per Assembly
*	6803 5500	Bin Motor Board	1



Index No.	Part No.	Description	Q'ty per Assembly
101	1102 0995	Connector - 2P	
102	1102 1194	Connector - 3P	
103	1103 1695	Connector - 15P	
104	1103 1748	Connector - 12P	
105	1208 1024	Solid State Relay 240V 2A	
106	1401 0832	Diode - DSA1A1	

3. SORTER HARNESS (A423)






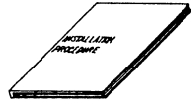


3. SORTER HARNESS (A423)

Index No.	Part No.	Description	Q'ty per Assembly
1	6803 5600	Main Harness	1
2	6803 5610	Interface Harness	1

Index No.	Part No.	Description	Q'ty per Assembly
101	1100 0051	Wire Terminal	
102	1100 1042	Socket - Mate-N-Lock	
103	1100 1169	Fastening Receptacle	
104	1100 1238	Pin - Mate-N-Lock	
105	1100 1239	Pin - Mate-N-Lock	
106	1100 1249	Receptacle Terminal	
107	1100 1264	Wire Terminal	
108	1100 1327	Contact	
109	1100 1328	Contact	
110	1102 0512	Connector - 3P	
111	1102 0983	Connector - 2P	
112	1102 1408	Connector - 1P	
113	1102 1508	Connector - 3P	
114	1102 1524	Connector - 2P	
115	1102 1620	Connector - 3P	
116	1102 1911	Connector - 3P	
117	1102 1919	Connector - 11P	
118	1102 1923	Connector - 15P	
119	1102 1934	Connector - 12P	
120	1102 1952	Connector - 2P	
121	1102 1964	Connector - 2P	
122	1102 1966	Connector - 4P	

4. DECAL AND DOCUMENT (A423)

<p>1</p> <div data-bbox="240 98 564 352"><p> Removing Misfed Paper</p><p>1  2 </p><p>Open cover and paper guides. Remove paper.</p></div>	<p>2</p> <div data-bbox="684 165 749 305"><p> </p></div>	<p>3</p> <div data-bbox="924 186 1113 284"></div>

4. DECAL AND DOCUMENT (A423)

Index No.	Part No.	Description	Q'ty per Assembly
1	A414 6512	Jam Removal Decal	1
1	A414 6522	Multi-lingual Decal	1
2	A414 6521	Decal - Guide Plate	1
3	A423 8611	Installation Procedure - English	1
	A423 8650	x/o,MB1	1
3	A423 8616	Installation Procedure -5 Languages	1
	A423 8615	x/o,MB1	1

Index No.	Part No.	Description	Q'ty per Assembly
-----------	----------	-------------	-------------------

PARTS INDEX

Part No.	Description	Paper and Index No.
A423 1131	Base Plate	3-42
A423 1143	Base Shaft	3-35
A423 1144	Base Roller	3-34
A423 1145	Receive Plate	3-39
A423 1151	Stay	3-37
A423 1161	Upper Stay	3-4
A423 2110	Upper Guide Plate	3-19
A423 2121	Entrance Guide Plate	3-44
A423 2122	Upper Seal	3-13
A423 2123	Lower Front Seal	3-15
A423 2124	Lower Rear Seal	3-14
A423 2271	Guide Plate Lever	3-62
A423 2272	Guide Plate Arm	3-56
A423 2311	Guide Plate	3-69
A423 2531	Guide Plate Knob	3-18
A423 3221	Sorter Bin - Bottom	3-7
A423 3311	Left Spring	3-20
A423 3327	Transfer Wheel	3-54
A423 3425	Bracket - Half Turn Sensor	3-51
A423 3511	Bin Shaft Positioner	3-26
A423 3513	Bin Support Shaft	3-9
A423 3517	Bin Support Wire	3-24
A423 4216	Pulley	3-32
A423 4431	Switch Bracket	3-66
A423 4432	Shoulder Screw - M2.5	3-68
A423 4433	Spring	3-67
A423 4434	Switch Sheet	3-63
A423 4436	Board Bracket	3-65
A423 5410	DC Motor - 24V 2.9W (115V)	3-29
A423 6111	Front Cover	3-25
A423 6211	Rear Cover	3-57
A423 6311	Upper Cover	3-2
A423 6511	Upper Cover Hinge	3-3
A423 7111	Relay Guide Mylar MB1 (Added)	3-72
A423 8611	Installation Procedure - English	9-3

Part No.	Description	Paper and Index No.
A423 8615	x/o,MB1	9-3
A423 8616	Installation Procedure -5 Languages	9-3
A423 8650	x/o,MB1	9-3

Part No.	Description	Paper and Index No.
AA12 1001	Antistatic Brush	3- 10
A414 2311	Spring Plate - Guide Stopper MB4 (Added)	3- 73
A414 3111	Sorter Bin - Odd	3- 5
A414 3151	Sorter Bin - Even	3- 6
A414 5410	DC Motor - 24V 2.9W (220/240V)	3- 29
A414 6512	Jam Removal Decal	3- 1
A414 6512	Jam Removal Decal	9- 1
A414 6521	Decal - Guide Plate	3- 11
A414 6521	Decal - Guide Plate	9- 2
A414 6522	Multi-lingual Decal	3- 1
A414 6522	Multi-lingual Decal	9- 1
5053 0447	Bushing - 6mm	3- 21
5205 5250	LED Sensor Type S	3- 50
5403 2075	Stepped Screw	3- 60
5895 2165	Washer - 6x12	3- 61
6769 1128	Mounting Stay Magnet	3- 41
6769 5655	Angle - Cord Clamp (70)	3- 53
6802 5703	Grounding Wire	3- 38
6803 1161	Upper Mounting Stud	3- 36
6803 2111	Lower Guide Plate	3- 43
6803 2221	Guide - Upper Guide Plate	3- 17
6803 2231	Bushing - 4x6x5mm	3- 16
6803 2241	Upper Exit Roller	3- 12
6803 2261	Dumper - Upper Guide Plate	3- 40
6803 2273	Stepped Screw - M4	3- 55
6803 2410	Lower Exit Roller	3- 27
6803 2415	Drive Pulley	3- 71
6803 3316	Lift Bar	3- 8
6803 3321	Front Transfer Wheel	3- 22
6803 3331	Transfer Wheel Shaft	3- 28
6803 3411	Lever - Home Position Sensor	3- 48
6803 3412	Stepped Screw - M4	3- 49
6803 3413	Lever Spring	3- 47
6803 3414	Lever Stopper	3- 46
6803 3427	Holder - Half Turn Sensor	3- 52

Part No.	Description	Paper and Index No.
6803 4211	Pulley - 18T	3- 70
6803 4311	Timing Belt - 94XL	3- 23
6803 4316	O Ring	3- 33
6803 4411	Bracket - Paper Exit Motor	3- 31
6803 5400	Bin Motor - AC 14/17W	3- 30
6803 5420	x/o,MB3	3- 30
6803 5430	Paper Exit Sensor	3- 45
6803 5500	Bin Motor Board	3- 64
6803 5500	Bin Motor Board	5- *
6803 5600	Main Harness	3- 58
6803 5600	Main Harness	7- 1
6803 5610	Interface Harness	3- 59
6803 5610	Interface Harness	7- 2

Part No.	Description	Paper and Index No.
0313 0060W	Philips Pan Head Screw - M3x6	3-108
0313 0120W	Philips Pan Head Screw - M3x12	3-116
0314 0060W	Philips Pan Head Screw - M4x6	3-101
0314 0080M	Philips Pan Head Screw - M5x8	3-112
0314 0080W	Philips Pan Head Screw - M4x8	3-103
0314 0120W	Philips Pan Head Screw - M4x12	3-117
0315 0080W	Philips Pan Head Screw - M5x8	3-106
0344 0080D	Philips Truss Head Screw - M4x8	3-111
0434 0080W	Tapping Screw - M4x8	3-104
0632 0140G	Parallel Pin	3-107
0701 0030B	Flat Washer - M3	3-122
0704 0040C	Toothed Washer - M4	3-121
0720 0030E	Retaining Ring - M3	3-102
0720 0040E	Retaining Ring - M4	3-109
0720 0060E	Retaining Ring - M6	3-110
0951 4010W	Philips Screw With Flat Washer - M4x10	3-105
0965 3010W	Tapping Screw With Flat Washer - M3x10	3-113
1100 0051	Wire Terminal	7-101
1100 1042	Socket - Mate-N-Lock	7-102
1100 1169	Fastening Receptacle	7-103
1100 1238	Pin - Mate-N-Lock	7-104
1100 1239	Pin - Mate-N-Lock	7-105
1100 1249	Receptacle Terminal	7-106
1100 1264	Wire Terminal	7-107
1100 1327	Contact	7-108
1100 1328	Contact	7-109
1102 0512	Connector - 3P	7-110
1102 0983	Connector - 2P	7-111
1102 0995	Connector - 2P	5-101
1102 1194	Connector - 3P	5-102
1102 1408	Connector - 1P	7-112
1102 1508	Connector - 3P	7-113
1102 1524	Connector - 2P	7-114
1102 1620	Connector - 3P	7-115
1102 1911	Connector - 3P	7-116

Part No.	Description	Paper and Index No.
1102 1919	Connector - 11P	7-117
1102 1923	Connector - 15P	7-118
1102 1934	Connector - 12P	7-119
1102 1952	Connector - 2P	7-120
1102 1964	Connector - 2P	7-121
1102 1966	Connector - 4P	7-122
1103 1695	Connector - 15P	5-103
1103 1748	Connector - 12P	5-104
1105 0091	Cable Clip - 16mm	3-118
1105 0193	Nylon Stud	3-119
1105 0196	Harness Clamp	3-115
1204 1318	Microswitch	3-120
1208 1024	Solid State Relay 240V 2A	5-105
1401 0832	Diode - DSA1A1	5-106
1606 0755	Capacitor - 10uF 220V (115V)	3-114
1606 1380	Capacitor - 10uF (220/240V)	3-114

Part No.	Description	Paper and Index No.
AA12 1001	Antistatic Brush	3- 10
A414 2311	Spring Plate - Guide Stopper MB4 (Added)	3- 73
A414 3111	Sorter Bin - Odd	3- 5
A414 3151	Sorter Bin - Even	3- 6
A414 5410	DC Motor - 24V 2.9W (220/240V)	3- 29
A414 6512	Jam Removal Decal	3- 1
A414 6512	Jam Removal Decal	9- 1
A414 6521	Decal - Guide Plate	3- 11
A414 6521	Decal - Guide Plate	9- 2
A414 6522	Multi-lingual Decal	3- 1
A414 6522	Multi-lingual Decal	9- 1
5053 0447	Bushing - 6mm	3- 21
5205 5250	LED Sensor Type S	3- 50
5403 2075	Stepped Screw	3- 60
5895 2165	Washer - 6x12	3- 61
6769 1128	Mounting Stay Magnet	3- 41
6769 5655	Angle - Cord Clamp (70)	3- 53
6802 5703	Grounding Wire	3- 38
6803 1161	Upper Mounting Stud	3- 36
6803 2111	Lower Guide Plate	3- 43
6803 2221	Guide - Upper Guide Plate	3- 17
6803 2231	Bushing - 4x6x5mm	3- 16
6803 2241	Upper Exit Roller	3- 12
6803 2261	Dumper - Upper Guide Plate	3- 40
6803 2273	Stepped Screw - M4	3- 55
6803 2410	Lower Exit Roller	3- 27
6803 2415	Drive Pulley	3- 71
6803 3316	Lift Bar	3- 8
6803 3321	Front Transfer Wheel	3- 22
6803 3331	Transfer Wheel Shaft	3- 28
6803 3411	Lever - Home Position Sensor	3- 48
6803 3412	Stepped Screw - M4	3- 49
6803 3413	Lever Spring	3- 47
6803 3414	Lever Stopper	3- 46
6803 3427	Holder - Half Turn Sensor	3- 52

Part No.	Description	Paper and Index No.
6803 4211	Pulley - 18T	3- 70
6803 4311	Timing Belt - 94XL	3- 23
6803 4316	O Ring	3- 33
6803 4411	Bracket - Paper Exit Motor	3- 31
6803 5400	Bin Motor - AC 14/17W	3- 30
6803 5420	x/o,MB3	3- 30
6803 5430	Paper Exit Sensor	3- 45
6803 5500	Bin Motor Board	3- 64
6803 5500	Bin Motor Board	5- *
6803 5600	Main Harness	3- 58
6803 5600	Main Harness	7- 1
6803 5610	Interface Harness	3- 59
6803 5610	Interface Harness	7- 2

Part No.	Description	Paper and Index No.
0313 0060W	Philips Pan Head Screw - M3x6	3-108
0313 0120W	Philips Pan Head Screw - M3x12	3-116
0314 0060W	Philips Pan Head Screw - M4x6	3-101
0314 0080M	Philips Pan Head Screw - M5x8	3-112
0314 0080W	Philips Pan Head Screw - M4x8	3-103
0314 0120W	Philips Pan Head Screw - M4x12	3-117
0315 0080W	Philips Pan Head Screw - M5x8	3-106
0344 0080D	Philips Truss Head Screw - M4x8	3-111
0434 0080W	Tapping Screw - M4x8	3-104
0632 0140G	Parallel Pin	3-107
0701 0030B	Flat Washer - M3	3-122
0704 0040C	Toothed Washer - M4	3-121
0720 0030E	Retaining Ring - M3	3-102
0720 0040E	Retaining Ring - M4	3-109
0720 0060E	Retaining Ring - M6	3-110
0951 4010W	Philips Screw With Flat Washer - M4x10	3-105
0965 3010W	Tapping Screw With Flat Washer - M3x10	3-113
1100 0051	Wire Terminal	7-101
1100 1042	Socket - Mate-N-Lock	7-102
1100 1169	Fastening Receptacle	7-103
1100 1238	Pin - Mate-N-Lock	7-104
1100 1239	Pin - Mate-N-Lock	7-105
1100 1249	Receptacle Terminal	7-106
1100 1264	Wire Terminal	7-107
1100 1327	Contact	7-108
1100 1328	Contact	7-109
1102 0512	Connector - 3P	7-110
1102 0983	Connector - 2P	7-111
1102 0995	Connector - 2P	5-101
1102 1194	Connector - 3P	5-102
1102 1408	Connector - 1P	7-112
1102 1508	Connector - 3P	7-113
1102 1524	Connector - 2P	7-114
1102 1620	Connector - 3P	7-115
1102 1911	Connector - 3P	7-116

Part No.	Description	Paper and Index No.
1102 1919	Connector - 11P	7-117
1102 1923	Connector - 15P	7-118
1102 1934	Connector - 12P	7-119
1102 1952	Connector - 2P	7-120
1102 1964	Connector - 2P	7-121
1102 1966	Connector - 4P	7-122
1103 1695	Connector - 15P	5-103
1103 1748	Connector - 12P	5-104
1105 0091	Cable Clip - 16mm	3-118
1105 0193	Nylon Stud	3-119
1105 0196	Harness Clamp	3-115
1204 1318	Microswitch	3-120
1208 1024	Solid State Relay 240V 2A	5-105
1401 0832	Diode - DSA1A1	5-106
1606 0755	Capacitor - 10uF 220V (115V)	3-114
1606 1380	Capacitor - 10uF (220/240V)	3-114